



47th South Central Area Rally



October 6-9, 2021

Kansas State Fairgrounds
Hutchinson, Kansas



FMCA
Your RVing Family

RV Travel Seminars



Win an RV Vacation for Two! (\$1,895 Value)

Visit our booth to enter to win. AND each seminar you attend, get another chance to win!

Rivers West RV Caravan The Path of Lewis & Clark

Thursday • 3:30pm • Scout East

Join us as we step back in time to the era of expansion. We'll follow the path of Lewis and Clark – traveling from heartland to Pacific shores, crossing through nine states, from Missouri to Oregon.

We'll follow the rivers and tributaries that helped guide these famous explorers and sustain the livelihoods of common settlers, trappers and natives who roamed these once unmarked territories.



Sensational Southwest Fall Caravan

Friday • 9:30am • Scout East

At this seminar, expect blue skies and natural wonders as we sweep through Arizona and New Mexico. We'll explore the Grand Canyon, Monument Valley and the petrified forest while getting acquainted with Native American Cultures.

Fascinating landmarks dot the way during this tour, including the famous Arizona Meteor Crater, New Mexico's Cumbres & Toltec Narrow Gauge Railroad and the Georgia O'Keeffe House.



**Visit us in the
exhibitor area!**

FMCA
Official FMCA RV Tour Partner

Alaska • Canada • USA • Mexico • Overseas
855-385-3622 • FantasyRVTours.com



Professional Arts

Scout East - Seminars
Scout West - Crafts

4H Centennial Hall

Golf Carts
Radios
Signs

Encampment Building

- Foyer
- Dillion Hall
- Dane Hansen Auditorium
- Entertainment Seminar 1
- Kansas Fair Hall



Six-State Rally Association Officers



Herman Mullins
F302225
Herman and Bobbie

President
South Central Area of FMCA



L B Butts
F444406
L B and Carol

North Area Vice-President
Facilities



Herman Alsup
F362546
Mitzi and Herman

South Area Vice-President
Commercial and Seminars



Dianna Huff
F363612
Larry and Dianna

Secretary
Food Service



Connie Pool
L140306
Connie

Treasurer
Registration and Information



Joe Wright
F051289
Joe and Martha

Immediate Past President

Cadre and SRA Committees

Herman Mullins President

Joe Wright	Immediate Past President
Charlie Adcock	Consultant
Fred Kennedy	Consultant
Darrell Gilliland	Consultant
Joe Wright	Safety Officer
Dan Layne	

Herman Mullins Rally Master

Dan Layne	Chaplain
Vonieta Stogner	Entertainment
Jaime Gallego	Webb Coordinator
Connie Farrar	Activity Sheet Coordinator
Charley Kennington, Captain	Communications
Dan Stogner, Lt.	Communications
Jaime Gallego, Captain	Photography
Brad Mudgett, Lt.	Photography

Herman Alsup Commercial & Seminars

Brenda Scherback, Captain	Display Coaches
, Lt.	Display Coaches
Herman Alsup, Captain	Exhibitors
Ted Watts, Lt.	Exhibitors
Leroy Hinderliter, Lt.	Exhibitors
Mitizi Alsup, Captain	FMCA Merchandise
Kay Watts, Lt.	FMCA Merchandise
Mark Scherback, Captain	Seminars
Katy Lacy, Lt.	Seminars
, Lt.	Seminars

L B Butts Facilities

Thomas Guidry, Captain	Parking
Steve Pickens, Lt.	Parking
, Lt	Parking
Keith Jerome	Water Dog
Bob Lacy	Water Dog
Bob Weithofer, Captain	Security
Carl Christensen, Lt.	Security
Larry Huff, Captain	Trams
Paul Pacior, Lt.	Trams
Darlene Kennington, Captain	Signs
Ron Norton, Lt.	Signs
Marvin Smith, Captain	Golf Cars/Radios
Linda Christensen, Lt.	Golf Cars/Radios

Dianna Huff Food Service

Connie Farrar, Captain	Food Service
Karen Pacior, Lt.	Food Service
, Lt.	Food Service
Vonieta Stogner, Captain	Decorations
Evelyn Lee, Lt.	Decorations
Fred Kennedy	Ice Cream Social
Sharon Cheramie, Captain	Quilts
Lucy Cruz, Lt.	Quilts
Ann Smith, Hostess	Ladies Luncheon
Rose Mudgett, Captain	Crafts
Martha Wright, Acting Captain	Crafts
Lucy Cruz, Lt.	Crafts
Vern Miller, Lt.	Crafts

Connie Pool Registration & Information

Gloria Adcock, Captain	Registration
Sheila Sulcer, Lt.	Family Registration
Anne Jerome, Lt.	Family Registration
Denise Starzyk, Lt.	Family Registration
Herman Mullins	Volunteer Coordinator
Bobbie Mullins, Captain	Information
Carol Butts, Lt.	Information
Pat Weithofer, Captain	Office Manager
, Lt.	Office Manager
Pat Watts, Captain	Door Prize-50/50
Glenda Lane, Lt.	Door Prize-50/50

Audit Committee

Steve Pickens, Chairperson
Bill Beebe

Nominating Committee

Fred Kennedy, Chairman
Roland Cheramie
Louise Guidry

Volunteer Utilization Committee

Steve Pickens, Chairperson
Charlie Adcock
Richard Starzky

Bylaws Committee

Connie Pool, Chairperson
LB Butts
Joe Wright

Rally Site Committee

Joe Wright, Chairperson
Herman Mullins



FMCA's South Central Area **SIX-STATE RALLY ASSOCIATION, INC.**



October 1, 2021

It is so nice to Welcome everyone back on the road. Bobbie and I, like so many are glad to be back RVing, seeing old friends, and making new one.

Bobbie and I would like to welcome you to the 47th Six-State "INNER and OUTER SPACE" Rally here at the Kansas State Fairgrounds in the beautiful city of Hutchinson, Kansas. As always there are much to see and visit here in Hutchinson. They have the Salt Mine and the Space Museum to visit.

We have a great Rally planed for your enjoyment. Several things to note are Thursday is Chapter Day where Chapters have the chance to invite you to visit their Chapter at the Chapter Fair. Be sure and wear your Chapter Colors. Friday will be our Patriotic Day, where we recognize our country and those that served and those that are serving today. Please wear something of a Patriotic nature.

Saturday we will have the South Central Area Six-State Rally Association Governing Board Meeting. This is our election year where we will be electing the Officer to serve on the Executive Board for the next 2 years. All offices are up for election, The Senior Vice President, the Northern Region Vice President, the Southern Region Vice President, the Secretary, and the Treasurer. I was elected to the position of National Area Vice President for the South Central Area in April of this year. I would like to thank the National Directors of the South Central Area for their confidents in me.

There are a lot of people that make a Rally great. The Cadre, the Captains and Lieutenants that work all year preparing for the Rally. All the folks that volunteer each year, they come to the Rally and work where needed. "Thank You to all of our Volunteers".

Need more information on Six-State and the South Central Area please visit our web site **sac-fmca.com**. There you can find the latest information on our Rallies, FMCA National Conventions and the latest pictures from the Rally.

Thank you for attending our 47th Six-State Rally. Now let's get back to having FUN.

Herman Mullins
National VP South Central Area
President Six-State Rally Association/Rally master





117 N Walnut
P.O. Box 519
Hutchinson, KS 67504

Phone: 620.662.3391
Fax: 620.662.2168

www.hutchchamber.com

Welcome to Hutchinson!

On behalf of the Chamber Board of Directors, Visit Hutch Advisory Board, our members and staff, we want to be among the first to welcome you to our city! We are looking forward to you spending time in Hutchinson and know that you will have a great time while you are here.

We hope you have the opportunity to get out and explore some of our unique attractions, locally-owned restaurants and our vibrant downtown. Downtown Hutchinson has invested \$21 million to revitalize its streetscapes, as well as becoming a hub for unique restaurants, one-of-a-kind boutiques, and antique shops.

The Cosmosphere has been a popular attraction for years. This is the only Smithsonian-affiliated museum in Kansas and features spacecraft from the Mercury, Gemini and Apollo missions, including the Apollo 13 Command Module, Odyssey. Currently on display is the Liberty Bell 7 spacecraft, which is must-see while you are here. This spacecraft is typically on road at various museums across the world, but we are fortunate enough to have it home in Hutchinson for next few weeks.

Get out of the Kansas heat by heading 650 feet underground to Strataca. As the only museum of its kind in the western hemisphere, your attendees will have the chance to explore the history of mining salt in an active salt mine! Take a tram ride and train ride out into areas that were mined in the 1950's and are perfectly preserved from that era!

Hutchinson has so much to offer, and I hope you are able to enjoy it all! We are honored you are here and again, welcome to Hutchinson!

Sincerely,

Debra Teufel, President/CEO
Hutch Chamber

LeAnn Cox, Vice President of Operations & Tourism
Visit Hutch

connect. grow. play. explore.

FMCA

Your RVing Family

familyRVing

Six-States Attendees:

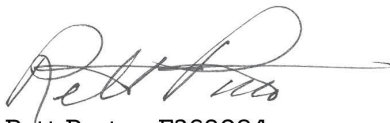
Welcome to the Kansas State Fairgrounds in Hutchinson, Kansas. Herman and Bobbie Mullins along with their area officers and planning staff have put a lot of effort into making this an exciting rally for all attendees. The South Central Area Rally is always loaded with interesting seminars, a chapter fair inviting to new members, and great evening entertainment. Three full breakfasts will get your day started, and you don't want to miss the ice cream social.

Claire and I haven't been to Hutchinson for several years, but we still talk about the great time we had exploring the area. The Cosmosphere is a Smithsonian affiliate museum that houses so many U.S. space items that it is second only to the national Air and Space Museum in Washington D.C. When we were there, we were greeted with an SR-71 hanging in the entrance. This space museum also has the largest collection of Russian space relics away from Moscow. If you don't want to go see the skies, then take a tour 650 feet below the earth's surface down in the salt mine. You will be astonished on what is stored in this working mine. Strataca is worth your time.

FMCA events only work if we have volunteers who step up and make the events possible. We cannot give our volunteers enough credit and thanks for all the work they do making these events successful.

From personal experience, Claire and I can tell you that we met a couple at a Six-States Area Rally, and we became life-long friends after being parked beside them in Conroe, TX. We look forward to seeing them again this year. Take time to meet your neighbors at every FMCA event. We hope you will make life-long friends who you will see and communicate with many times during the year. Making friends is one of the greatest benefits of being a member of FMCA.

Safe travels, and we look forward to seeing you there.



Rett Porter, F369084
FMCA National President



FMCA.com • FamilyRVingmag.com

8291 Clough Pike • Cincinnati, Ohio 45244

800-543-3622 • 513-474-3622 **tel**

513-474-2332 **fax**



Official List of South Central Area Chapters

Arkansas Travelers

Bluebonnet Travelers

Caprock Cruisers

Coaches for Christ
South Central

Cotton Country Travelers

Country Coach Texans

Covered Wagons

Cruisin' Cajuns

Frustrated Maestros
South Central

Gateway Getaways

Happy (OK) Wanderers

Hi Plains

Kansas Twisters

Lone Star

Lone Star Bounders

Midwest Prairie Schooners

Ozark Ridge Runners

Ozarks Prairie Sooners

Pelican Travelers

Rally In The Pasture

Red River Rovers

River City Travelers

Roamin' Catholics
South Central

Rollin' Okies

Sooner Coaches

South Central Bus Nuts

South Central Wanderers

South Texas Renegades

Southwinders

Stars of Texas

Texans On Safari

Texas Road Runners

Thousand Trails of Texas

Travlin Texans

Wan-Na-Go's

Westex

It takes a lot of people to make this rally happen . . .

A special thank you to the Officers, Cadre, Committee Members, and especially the Volunteers for their year-long efforts to plan and support the . . .

47th Annual South Central Area Rally



Exhibitors

Kansas Fair Hall

Vendor Name:

Auto Glass Boss

Coastal Reflections

Euroshine Inc.

Fantasy Tour

Lloyd DeGerald

My Pillow

SkyMed

Streak Free

Sweet Carolines

Rec Wash

Wash Wax All

FMCA Merchandise Booth

FMCA

**KANSAS STATE FAIRGROUNDS is located at
2000 N POPLAR ST, HUTCHINSON, KS 67502 P: (602) 669-3600**

TV STATIONS: KSNW(3), KAKE(10), KWCH(12), KSAS(24)

RADIO STATIONS: KWHK (Classic Rock) 95.5 FM KZSN (Country) 102.1 FM
KHUT (Country) 102.9 FM KHCC (Public Radio) 90.1 FM
K230BP(Christian Contemporary) 93.9 FM

POST OFFICE: 128 E 1st Ave, Hutchinson, KS 67501

EMERGENCY SERVICES: DIAL- 911

MEDICAL SERVICES:

- Hutchinson Regional Medical Center 1701 E 23rd Ave, Hutchinson, KS (620)665-2000
- Hutchinson Clinic 2101 N Waldron St, Hutchinson KS (620) 669-2500
- Hutchinson Clinic 1100 N Main St, Hutchinson KS (620) 669-6690

PHARMACY:

Walgreen's Pharmacy- 510 E 30th Ave, Hutchinson KS (620) 663-2241
Hutchinson Clinic Pharmacy - 2101 N Waldron, Hutchinson KS (620) 663-9542
Walmart Pharmacy – 1905 E 17th Ave Hutchinson KS (620) 669-0125

SHOPPING:

Hutchinson Mall -1500 E 11st Ave, Hutchinson KS
Antique District 880 S Main St, Hutchinson KS
Old Hardware Store 208 Main St, Hutchinson KS
Walmart – 1905 E 17th Ave, Hutchinson KS

VETERINARIAN SERVICES:

Country Junction 2021 E 4th Ave, Hutchinson KS – (620) 663- 6150
Hutchinson Small Animal Hospital 1201 E 30th Ave, Hutchinson KS – (620) 665-8743

RESTAURANTS:

Airport Steakhouse – 1100 Airport Rd	Sirloin Stockade – 1526 E 17 th Ave
Hog Wild Pit Bar-B-Q – 2401 N Main St	Applebee's - 9088 Mansfield Rd.
Roy's Hickory Pit Bar-B-Q – 1018 Nickerson Blvd	Casa Azteca Mexican Grill – 2803 N Lorraine St
IHOP – 1807 E 17 th Ave	Chili's Grill & Bar – 1801 E 17 th Ave
Fazoli's – 1405 E 11 th Ave	El Potrillo Restaurant (Mexican) – 2301 N Main St
Olive Garden Italian Restaurant – 1700 E 17 th Ave	Applebee's – 1609 E 17 th Ave
Carriage Crossing Restaurant & Bakery – 10002 S Yoder Rd, Yoder, KS	

ENTERTAINMENT:

Fox Theatre – Stage 9 Theater – Kansas Canvas Wall Art Prints - Horseshoe Casino - Margaritaville Casino - Sam's Town Casino

ATTRACTIONS:

Strataca Salt Mines – Sandhills State Park – Dillon Nature Center – Hutchinson Zoo – Reno County Museum – George W Pyle Park – Cosmosphere (Hall of Space Museum) – Reno County Farmers Market Oct 6th & 9th – Cheney State Park – Quivira Wildlife Refuge – Yoder (The Quite Little Town) – Downtown Hutchinson

www.VisitHutch.com

For Emergency Services
Ambulance - Fire - Police
Dial 911

Provide your location. Turn on your headlights and flashers to help emergency personnel to locate you.

Hospital Information

Hutchinson Regional Medical Center

1701 E 23rd Ave,

Hutchinson, KS (620)665-2000

Chapter Day: Thursday is designated as **Chapter Day** to recognize the importance, the fellowship and the enjoyment of chapter gatherings. On Thursday evening, your chapter may plan to eat and meet together or join together with another chapter for an evening of sharing food, fellowship, entertainment, games or movies around your coaches or in the Conference Center.

Chapter Fair: You are missing out on great fun if you are not a member of a chapter. The Chapter Fair is your opportunity to explore the interests, activities and fellowship of different chapters at 2:00 p.m. on Thursday in Dillion Hall (Breakfast Area). It is preceded by the Ice Cream Social at 1:00 p.m.

Craft Registration: Register for Craft Events in the Foyer of the Encampment Building Wednesday from 9 a.m. to 11:00 a.m. and 3 p.m. to 4 p.m.

Door Prizes: Be sure to check with the SRA Prize Booth each day for your FMCA number. New drawing will be posted each day.

Emergency Services: First Aid will be provided by local emergency 911 services. If in your RV, turn on your headlights and flashers to help identify your location.

50/50: The 50/50 drawing benefiting the Local New Beginnings Shelter will be conducted Saturday following the evening's entertainment. Tickets can be purchased each day in the Exhibit area, at the Door Prize booth, and in the auditorium prior to the evening entertainment.

First Timers Gathering: If this is your first South Central Area Rally, you are invited to a special welcome and briefing from our South Central Area National Vice President Herman Mullins and other area officers at 1:00 p.m. on Wednesday in the Dane Hansen Auditorium located in the Encampment Building. Hope to see you there.

Food: Three breakfasts are included with your registration. They are being served Thursday, Friday, and Saturday mornings from 7:30 a.m. to 9:00 a.m. in Dillion Hall. Rally Badges are required for entrance.

Ice Cream Social: Enjoy the Ice Cream Social at 1:00 p.m. in Dillion Hall. Rally Badges are required to be served.

Information: Located in the Foyer of the Encampment Building, Information will be available to answer your questions daily from 9:00 a.m. to 4:00 p.m. Trade your Locator Card for your Arrival Packet here.

Ladies Luncheon: You won't want to miss this event, so Ladies who did not pre-register for the Luncheon may register on Tuesday, Wednesday or Thursday from 8:00 a.m. to 4:00 p.m. in the Foyer of the Encampment Building. The Luncheon is Friday at 11:30 a.m. in Dillion Hall.

Lost and Found: Check at Information in the Foyer of the Encampment Building for lost items. All items found should be taken to Information.

Name Badges: Please wear your rally badge both on and off the grounds. Your rally badge provides you admittance to all rally activities.

Mass/Rosary: Attend Mass/Rosary on Wednesday and Thursday at 5:00 p.m. in Scout East.

Morning Devotion: Attend Thursday, Friday and Saturday at 7:30 a.m. in Scout East.

Pets: Your pets are only allowed in the family parking areas. Pets are not invited into exhibits, display coaches, or other rally functions. Your pets must be leashed when outside your motorhomes. ***Please clean up after your pets.***

Quiet Hours: Quiet hours are 11:00 p.m. to 7:00 a.m.



Quilt Display: Enjoy the display of chapter donated quilts on Wednesday noon to 4 p.m., Thursday, and Friday from 9:00 a.m. to 4:00 p.m. and Saturday 9 a.m. till noon in the Kansas Fair Hall. Your donated quilts will be accepted for display on Wednesday from 8:00 a.m. to Noon. Quilts will be donated half to San Antonio Veteran's and half to local New Beginnings Shelter. Enjoy the Quilt Social on Thursday at 9:30 a.m. in the Kansas Fair Hall.

Safety: We take Safety Seriously!! Please report any problems to Security. Help us by obeying our rules for you during your stay. We are concerned for the safety of all our members, especially YOU.

Trash: Place all trash in the containers provided.

Security: It is strongly recommended that you do not leave anything out if you are not at your coach and always lock your coach and car. Make sure mobility carts and golf cars are secured when not in use. We can all help if each of us watches for people who do not belong to our group. Most of us know who does not belong. Report suspicious people to our security or call 911 if you see a crime in progress.

Theme: Enjoy this year's theme, Inner and Outer Space. Thursday is Chapter Day so wear your chapter colors. Friday is Patriotic Day. Wear your red, white and blue to celebrate.

FAILURE OF HOOK-UPS

(Electrical, Water, Sewer)

Call 501-590-8095

If no answer leave a message briefly describing the problem, your location and a call back number

INNER AND OUTER SPACE RALLY SCHEDULE

OPENING DAY

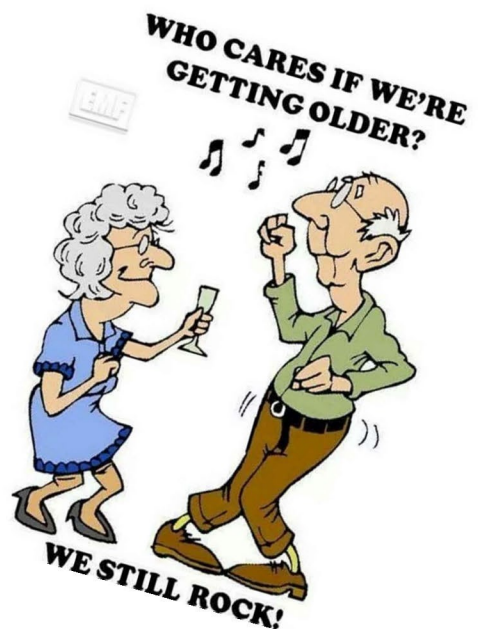
WEDNESDAY INNER AND OUTER SPACE, October 6th



9:00 a.m. – 4:00 p.m.	Family Registration Information Booth Bring Your Locator Card Sign up for Ladies Luncheon	Encampment BLD., Foyer
9:00 a.m. – 11:00 a.m.	Craft Sign Up	Encampment BLD., Foyer
9:00 a.m. – 11:30 a.m.	Frustrated Maestros Rehearsal	Encampment BLD., Dillion Hall
NOON	Exhibits, Seminars OPEN	
Noon – 4:00 p.m.	Indoor Exhibits Quilt Display	Encampment BLD., KS Fair Hall Encampment BLD., KS Fair Hall
1:00 p.m. – 1:30 p.m.	FMCA: First Timers Reception	Encampment Building -
2:00 p.m. – 4:00 p.m.	Meet Your Officers	Auditorium, Seminar 1
4:00 p.m. – 4:30 p.m.	FMCA Benefits	Auditorium, Seminar 1
3:00 p.m. – 4:00 p.m.	Craft Sign Up	Encampment BLD., Foyer
7:30 p.m.	WELCOME	Encampment Building Dane Hansen Auditorium Seminar 1

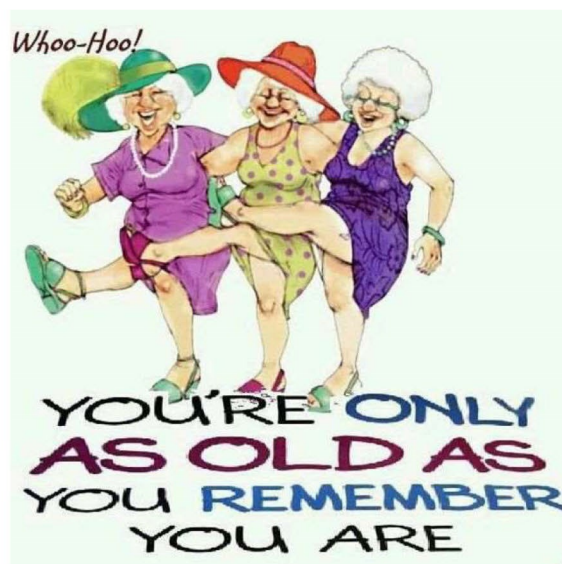
INTRODUCTION OF SRA OFFICERS, NATIONAL OFFICERS, VIP GUESTS

ENTERTAINMENT: DANCING WITH THE OLDIES



**DANCING TO THE OLDIES, BUT GOODIES
OR JUST SIT AND LISTEN TO THE MUSIC**

WEDNESDAY NIGHT OCTOBER 6, 2021
AFTER OPENING CEREMONIES
7:45 TO 8:30 PM

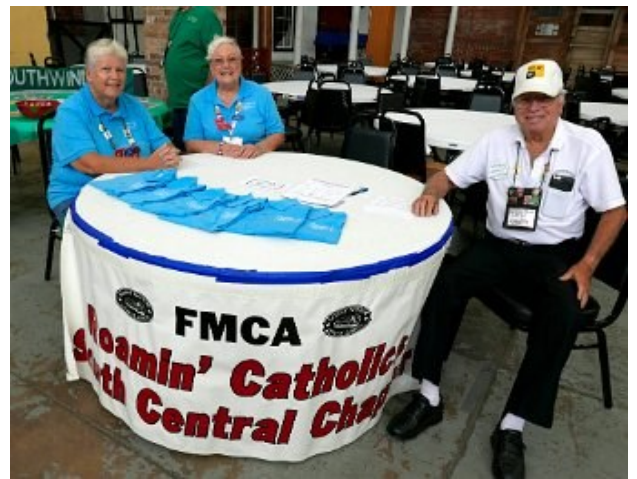


THURSDAY CHAPTER DAY OCTOBER 7

7:30 a.m. – 9:00 a.m.	Full Breakfast	Dillion Hall
7:30 a.m. – 8:30 a.m.	Frustrated Maestros	Dillion Hall
7:30 a.m. – 8:00 a.m.	Devotions	Scout East
9:00 a.m. – 4:00 p.m.	Family Registration	Foyer
	Information	Foyer
	Bring Your Locator Card	
9:00 a.m. – 4:00 p.m.	Exhibits	KS Fair Hall
	Quilt Display	
8:30 a.m. – 9:30 a.m.	Seminar - Aqua Hot	Scout East
9:00 a.m. – 10:00 a.m.	Craft - Bead Art	Scout West
9:30 a.m. – 10:30 a.m.	Quilt Social	KS Fair Hall
9:30 a.m. – 10:30 a.m.	Seminar - Wash Wax	Scout East
10:30 a.m. – 11:30 a.m.	Craft - How to make a Copper Wire Tree	Scout West
10:30 a.m. – 11:30 a.m.	Seminar - RV Travel Emergency Kit	Scout East
1:00 p.m. – 2:00 p.m.	Ice Cream Social	Dillion Hall
2:00 p.m. – 3:00 p.m.	Chapter Fair	Dillion Hall
3:00 p.m. – 4:00 p.m.	Craft - How to Make a Cooper Wire Tree	Scout West
3:30 p.m. – 4:30 p.m.	Seminar - Fantasy Tour	Scout East

Evening **Enjoy Your Chapter Events Together to Celebrate *Chapter Day***

- While at the Chapter Fair today, be sure to check with your chapters to see where your Chapter Event is tonight.
- There are a lot of first-timers attending the rally. Be sure to invite our first-timers to your Chapter Event.



CHAPTER FAIR OCTOBER 7TH THURSDAY
2 PM TO 3 PM DILLION HALL



Come and support your Chapter and find a new Chapter
 As a first time rally attendee this is the time to find a Chapter to belong to.



FRIDAY PATRIOTIC DAY OCTOBER 8

7:30 a.m. – 9:00 a.m.	Full Breakfast	Dillion Hall
7:30 a.m. – 8:30 a.m.	Frustrated Maestros	Dillion Hall
7:30 a.m. – 8:00 a.m.	Devotions	Scout East
9:00 a.m. – 4:00 p.m.	Family Registration	Foyer
	Information	Foyer
9:00 a.m. – 4:00 p.m.	Exhibits	Kansas Fair Hall
	Quilt Display	
9:30 a.m. – 10:30 a.m.	Seminar - Fantasy Tour	Scout East
9:00 a.m. – 10:00 a.m.	Craft - How to make a Copper Wire Tree	Scout West
11:30 a.m. – 1:30 p.m.	Ladies Luncheon	Dillion Hall
2:00 p.m. – 3:00 p.m.	Seminar - RV Travels	Scout East
2:00 pm. – 3:00 p.m.	Craft - How to make a Copper Wire Tree	Scout West
3:00 p.m. – 4:00 p.m.	Craft - Barn Quilt	Scout West
3:30 p.m. – 4:30 p.m.	Seminar - Sweet Carolines	Scout East
7:00 p.m.	WELCOME	Encampment Building Dane Hansen Auditorium Seminar 1
	VETERAN RECOGNITION AND VOLUNTEER RECOGNITION	
	ENTERTAINMENT: RUSTY RIERSON	
	50/50 DRAWING	

PROCEEDS FROM 50/50 RAFFLE WILL BE DONATED TO THE NEW HAPPENNINGS SHELTER.

WE APPRECIATE YOUR SUPPORT

TODAY IS PATRIOTIC DAY

Show your pride in America!



October 8, 2021 Friday Night With Rusty Rierson



Rusty has played all over the US (including Alaska). Rusty has toured abroad in Canada, Mexico, Central America, Scotland and in London. He often travels with the "Better Horses Radio Show" and has played rodeos, barrel races, and horse events all over the Midwest, including at the National Finals Rodeo in Las Vegas in 2009. Rusty has opened for and shared the stage and worked with artists such as Sawyer Brown, John Berry, Doug Stone, Michael Martin Murphy, Dustin Lynch, T. G. Sheppard, Moe Bandy, David Frizzell, R.W. Hampton, Johnny Lee, Bill Gentry, Leroy Van Dyke, Helen Cornelius, Billy Dean, Johnny Western, Love & Theft, Cassadee Pope, Collin Raye, Suzy Bogguss, Radney Foster, Logan Mize, Jimmy Fortune, Craig Campbell, Joe Diffie, Maddie & Tae, John Anderson, Walker Montgomery, Don Williams and many others. Rusty has appeared on numerous television and radio shows including The Shotgun Red Variety Show, Phil Mack International Country Show, Better Horses Television, Virginia Dreams, Midwest Country, Best of America by Horseback, Ridin' Horses with Kerry Kuhn, and in 2013 on American Idol, Rierson made it all the way to round 3 in San Francisco. Rusty also hosted his own radio show for a number of years, "Rusty Radio" which aired in Wichita, KS and multiple states across the Midwest.

SATURDAY

OCTOBER 9

7:30 a.m. – 9:00 a.m.	Full Breakfast	Dillion Hall
7:30 a.m. – 8:30 a.m.	Frustrated Maestros	Dillion Hall
7:30 a.m. – 8:00 a.m.	Devotions	Scout East
9:00 a.m. – 4:00 p.m.	Exhibits	Kansas Fair Hall
	Quilt Display	
9:00 a.m. – 10:00 a.m.	Craft: Grandma Bead Art	Scout West
9:00 a.m. – 10:00 a.m.	Seminar: Sky Med	Scout East
10:00 a.m. – 11:00 a.m.	Craft: Barn Quilt	Scout West
10:00 a.m. – 11:00 p.m.	Seminar: Sky Med	Scout East
11:00 a.m. – 12:00 p.m.	Craft: Tea Light	Scout West
1:00 p.m. – 3:00 p.m.	FMCA: SRA Board of Directors Meeting	Encampment Building Dane Hansen Auditorium Seminar 1
7:00 p.m.	INNER AND OUTER SPACE RALLY CLOSING SESSION	Encampment Building Dane Hansen Seminar 1

RECOGNITION OF QUILT DONATIONS

ENTERTAINMENT: RANDY MAC

50/50 DRAWING and Others

PROCEEDS FROM 50/50 RAFFLE WILL BE DONATED TO THE NEW BEGINNING SHELTER.

WE APPRECIATE YOUR SUPPORT

October 9, 2021
Saturday Evening With
Randy Mac



"If laughter really IS good medicine, with Randy Mac around.....there's a doctor in the house!"

Randy Mac is proof-positive that one can be extremely CLEAN and plenty FUNNY! Randy Mac has been entertaining for years. He has worked with many churches and ministry-related groups, but he also provided many programs for corporate, civic, and private groups as well.

Life is an adventure. Randy Mac is livin' it up!

FMCA Seminars

Title: Meet your FMCA National Officers (FMCA Benefits)

Presenter: National Officers

Day: Wed

Time: 2:00 pm - 4:00 pm

Location: Seminar 1 Main Room

Description: Membership in FMCA brings with it variety of benefits designed to enhance the RV life style.

FMCA Seminars

Title: FMCA [National](#) President and VP Forum

Presenter: Rett Potter National President / Gary Milner National VP

Day: Wednesday

Time: 4:00 pm - 4:30 pm

Location: Seminar 1 Main room

Description: Meet our National President and National Vice President for FMCA updates and information.

Title: RV Travels (Hidden gems)

Presenter: Gary and Glenda Milner (National VP)

Day: Friday

Time: 2:00 pm - 3:00 pm

Location: Scout East Seminar Room

Description: Round table discussion about famous campgrounds and venues that are Big Rig friendly and offer a great place to explore our beautiful Nation. At the end of the discussion, a typed summary will be provided to all attendees.

Title: RV Travel Emergency Kit

Presenter: Claire Porter and Glenda Milner

Day: Thursday

Time: 10:30 am - 1:30 pm

Location: Scout East Seminar Room

Description: Emergencies happen, when we least expect it. Having an emergency bag handy to evacuate the RV will save you undue stress of the first two days after the emergency situation. You will receive a list of suggested items to include in your emergency bag.

Educational Seminars

Title: AQUA Hot / Hydronic Units

Company Name: AQUA Hot

Lloyd DeGerald Services

Presenter: Lloyd/Brian

Day: Thursday

Time 8:30 am - 9:30 am

Location: Scout East

Description: Understanding your AQUA Hot / Hydronic Units

Educational Seminars

Title: River's West RV Caravan — The Path Of Lewis & Clark

Company Name: Fantasy RV Tours

Presenter: Laura Thor

Day: Thursday

Time: 3:30 pm - 4:30 pm

Location: [Scout East Seminar Room](#)

Description: Join us as we step back in time to the era of expansion. We'll follow the path of Lewis and Clark — traveling from heartland to Pacific shores, crossing through nine states, from Missouri to Oregon. We'll follow the rivers and tributaries that helped guide these famous explorers and sustain the livelihoods of common settlers, trappers and native who roamed these once unmarked territories. This is the ideal quest for RVers with the passion for exploration, travel and history.

Educational Seminars

Title: Sensational Southwest Fall Caravan

Company Name: Fantasy RV Tours

Presenter: Laura Thor

Day: Friday

Time: 9:30 am -10:30 am

Location: Scout East Seminar Room

Description: At this seminar, expect glue skies and natural wonders as we sweep through Arizona and New Mexico. We'll explore the Grand Canyon, Monument Valley and the petrified forest while getting acquainted with Native American Cultures. Fascinating landmarks dot the way during this tour, including the famous Arizona Meteor Crater, New Mexico's Cumbres & Toltec Narrow Gauge Railroad and the Georgia O'Keeffe House. This stunning blend of beauty and history is perfect for nature lovers and history buffs.

Title: Introducing Ladies Shapeware

Company Name: Sweet Caroline's

Presenter: Kathleen Haydon

Day: Friday

Time: 3:30 pm - 4:30 pm

Location: Scout East Seminar Room

Description: Introducing ladies shapeware clothing designs.

Educational Seminars

Title: RV Washing, Waxing, And Bug Removal Without A Ladder,

Company Name: Wash Wax

Presenter: Stephen Anderson

Day: Thursday

Time: 9:30 am -10:30 am

Location: [Scout East Seminar Room](#)

Description: Presentation of new polymer products and new pole technology.

Title: Are You Prepared For A Medical Emergency?

Company Name: SkyMed

Presenter: Carol , Kirby List

Day: Saturday

Time: 9:00 am - 10:00 am

Location: Scout East Seminar Room

Description: What are the differences between an Ambulance company and a Rescue Company?

Title: Veteran's Benefits

Company Name: Veterans Service Representative

Presenter: Clinton W. Conklin

Day: Saturday

Time: 10:00 am - 11:00 am

Location: Scout East Seminar Room

Description: Briefing on Veterans benefits.

Paint by Diamonds

Presented by Connie Pool

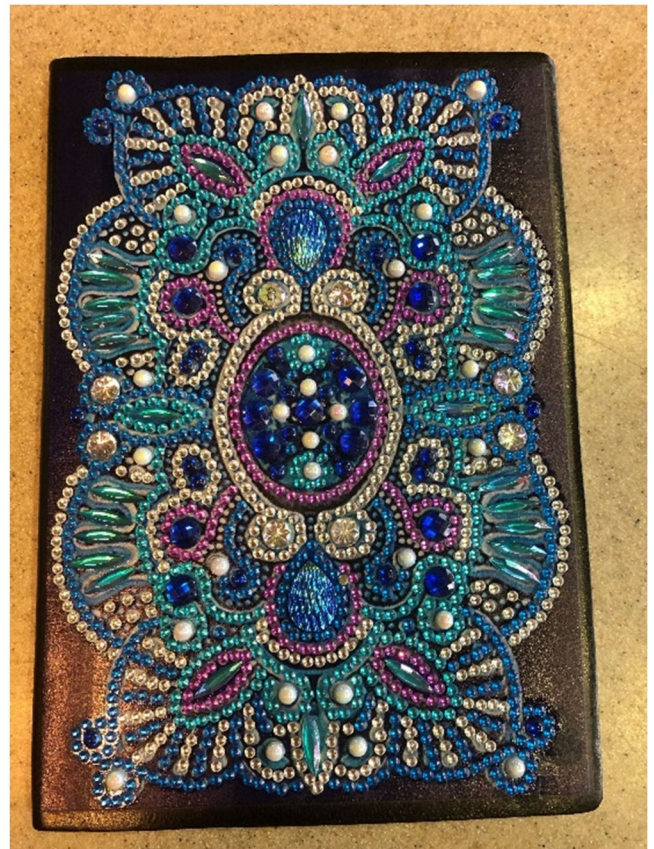
Various Designs and Color Choices

Make a travel journal or notebook.

The kit includes everything you need to complete this Jeweled Beauty

The cost is \$15.00

Class limited to 8 people due to co-vid spacing



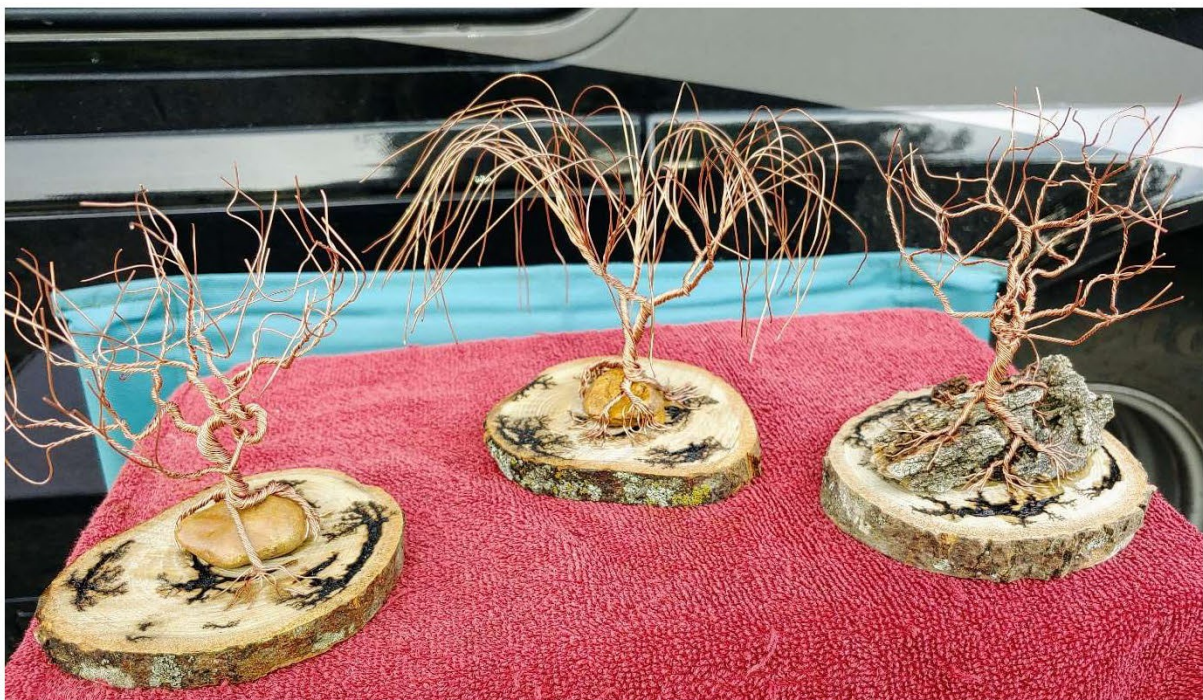
Copper Wire Tree

Presented by Vern Miller

With a few strands of copper wire, you will be able to construct a Beautiful Copper Wire Tree of your own. Copper wire and needed tools will be provided

Cost: \$20

Each class is limited to 8 people due to co-vid spacing



Wooden Barn Quilts

Present by Connie Farrar

Have you ever drove past a barn with a **quilt block** pattern and wondered about the meaning behind it? **Barn** quilts began to honor a loved one with a gorgeous piece of folk art.

In Adams County, Ohio, in 2001, Donna Sue Groves set out to honor her mother, Maxine, and her quilt art by **painting a quilt block** on her tobacco **barn**.

Come join us as we make a barn quilt to share with others as we travel from campground to campground.

Cost \$15.00

Class limited to 8 people due to co-vid spacing



Tea Light Snowman Ornament

Presented by Karen Pacior

You will make two cute little snowman ornaments with a light-up nose. Please bring scissors and a glue gun if you have one. Provided: materials needed for the ornaments.

The cost is \$5.00

Class limited to 8 people due to co-vid spacing





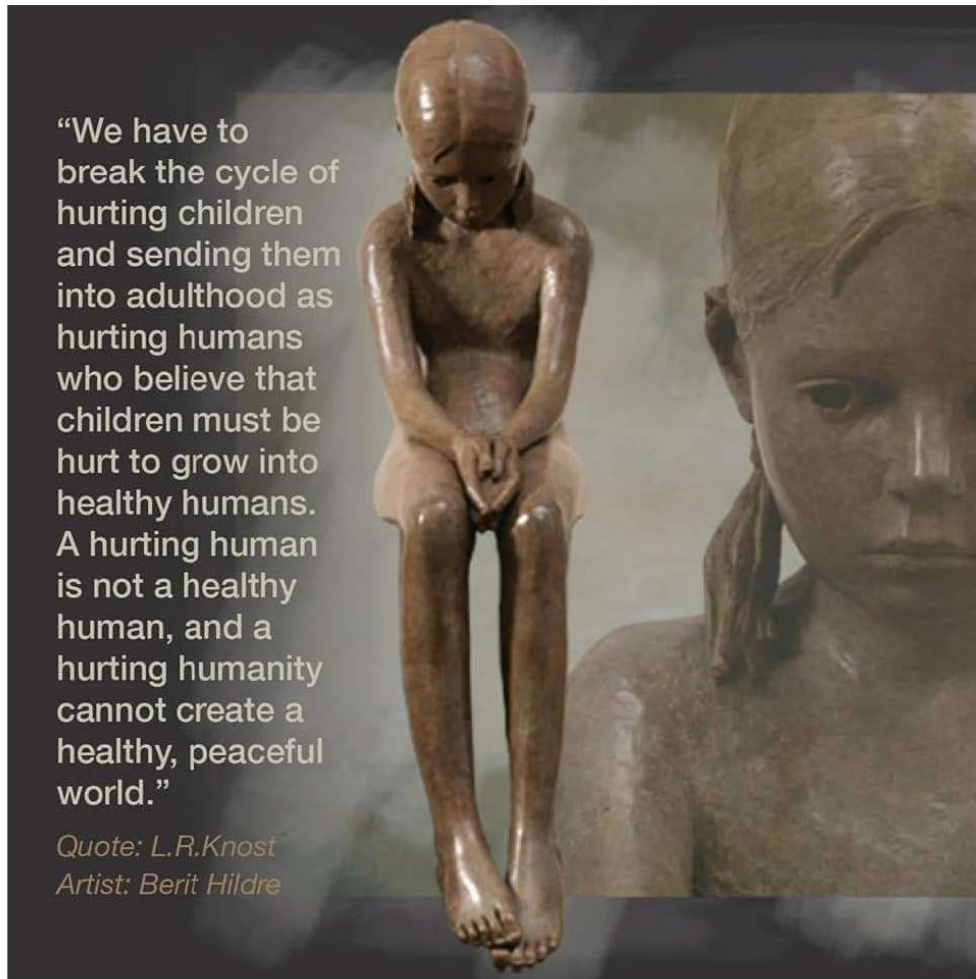
Quilt Silent Auction

From the quilts that the members and chapters turn in for the charity.

We are going to select 3 quilts for a silent auction.

You can pick the one you would like and put in a bid, the highest bid get the quilt and the money will be added to the 50/50 money to be given to the charity. The winners will be announced before the entertainment on Saturday night.





New Beginnings

They shelter and rebuild lives by providing for the men, women and children who are displaced from their homes.

We will donate all the 50/50 Charity and half of the blankets collected to the New Beginnings

The other half of blanket goes to Veterans Fisher House in San Antonio



THANK YOU

To All Of The Volunteers

Anyone that attends a South Central Area Rally is sure to notice all of the extra people that volunteer to do the jobs that make things operate smoothly. The officers would like to give a special thank you to the people that have given of their time and talents to help do the work that makes a rally operate smoothly.



Proudly Made in the USA since 1987.



Innovative Industries Inc.

1525 Deleglise Street

Antigo, WI 54409

SlideMaster®

Telescoping Cargo Handler

Each **SlideMaster** is a custom creation designed to fit your vehicle & needs.



Weight Capacities from
250 lbs up to 2,500 lbs.

Extensions from 70% up to 125%.



Our telescoping cargo-handling system allows easy access to your compartment without the hassle of moving items around.

It's all about Efficiency & Ease of Use!



Slides made of either Steel or Aluminum. Add an Aluminum Tray or Carpeted Wood Deck to complete your needs.



Models Available with Electric Drive.

Infrared Remote Available for Wireless Operation.

Visit our website **EVENTS** page for our RV and Trade Show Schedule.

www.slide-master.com

Our **PRODUCTS** page provides photos and details on our models for numerous applications:
RVs & Motorhomes, Truck Beds, Fire/Rescue/Utility Vehicles and Custom Applications.

Take a look then give us a call or send us an email – we'll help you pick the perfect product!

Toll Free: 800-374-1134 * Email: info@slide-master.com * 5% Discount when mentioning FMCA Six-State

Painless Paint & Repairs

free estimates

insurance friendly

xtremegraphics.net • 936-560-5888 • Nacogdoches, TX



Xtreme
Paint & Graphics